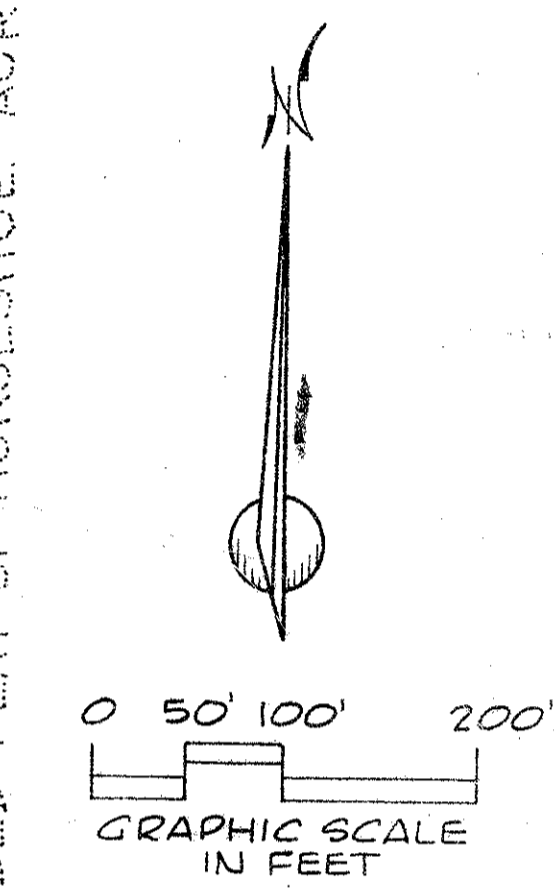
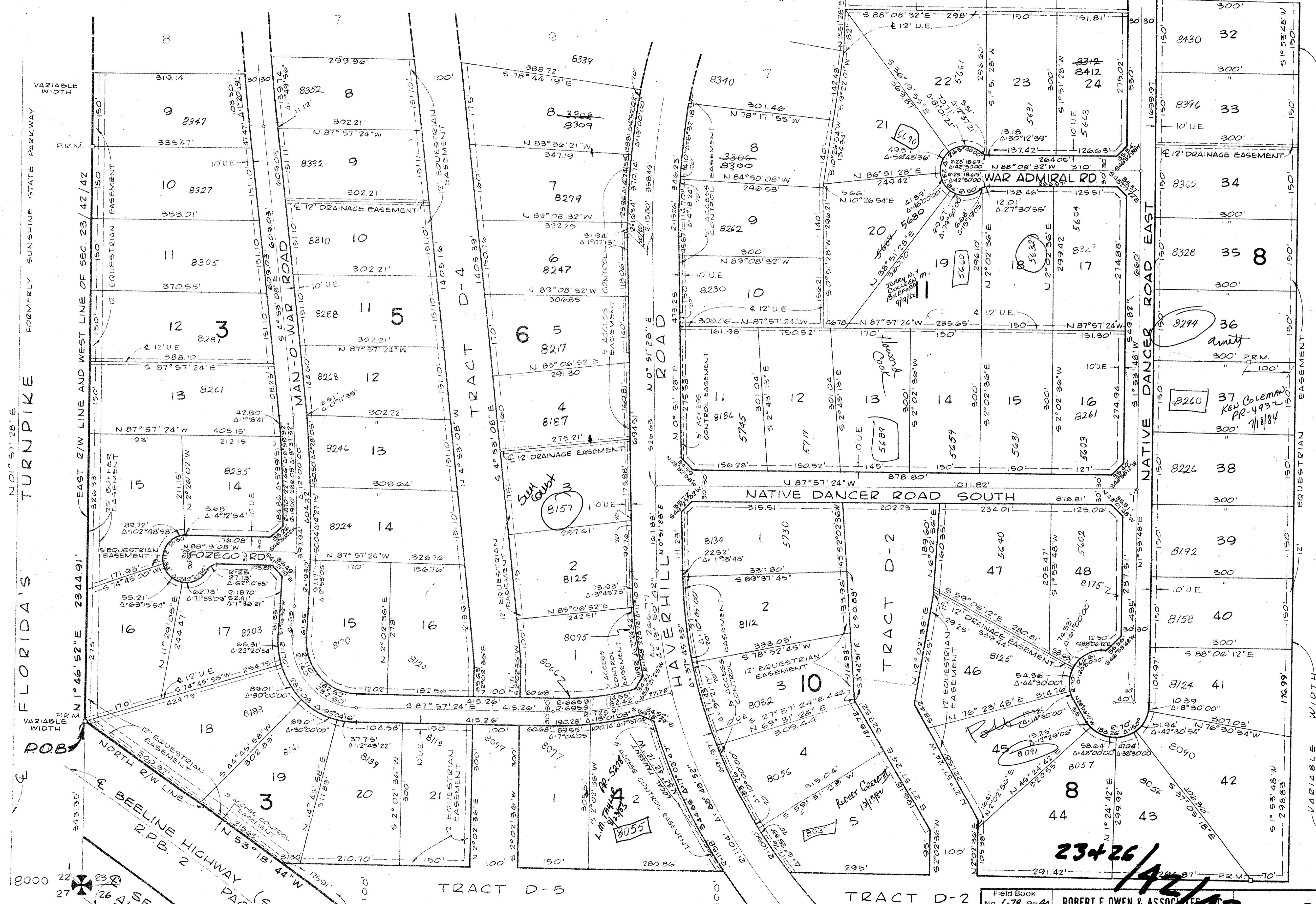


A PLANNED UNIT DEVELOPMENT PLAT OF HORSESHOE ACRES WEST

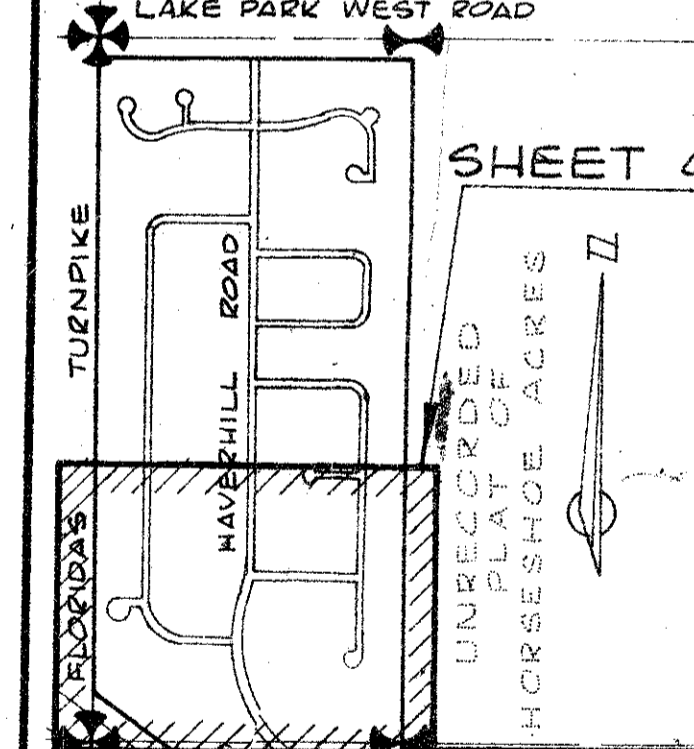
IN 7 SHEETS-SHEET 4 OF 7

SEE SHEET 3

52



1000-126
LAKE PARK WEST ROAD



29

KEY MAP
SCALE: 1"=1500'

All per notes
23426/42/42
34

FLORIDA'S TURNPIKE
FORMERLY SUNSHINE STATE PARKWAY

SEABOARD AIR RAILROAD
PAGE (SR. No. 710)
149

HORSESHOE ACRES

Field Book No. L-78 Pg. 46	ROBERT E. OWEN & ASSOCIATES, P.C. ENGINEERS · PLANNERS · SURVEYORS WEST PALM BEACH FLORIDA	Design J.C. YESTE	PLAT 52 OF HORSESHOE ACRES WEST	Date 76-1058
Drawn G.L. GOSS		Scale 1"=100'		
Checked D.M. WHITE		Sheet 4		
Field H. BLUM		of 7		
File No. BF-2253				